



TRANSPORT
ROUTES 2020

REDDAM HOUSE BERKSHIRE SCHOOL TRANSPORT SERVICE 2020 - 2021

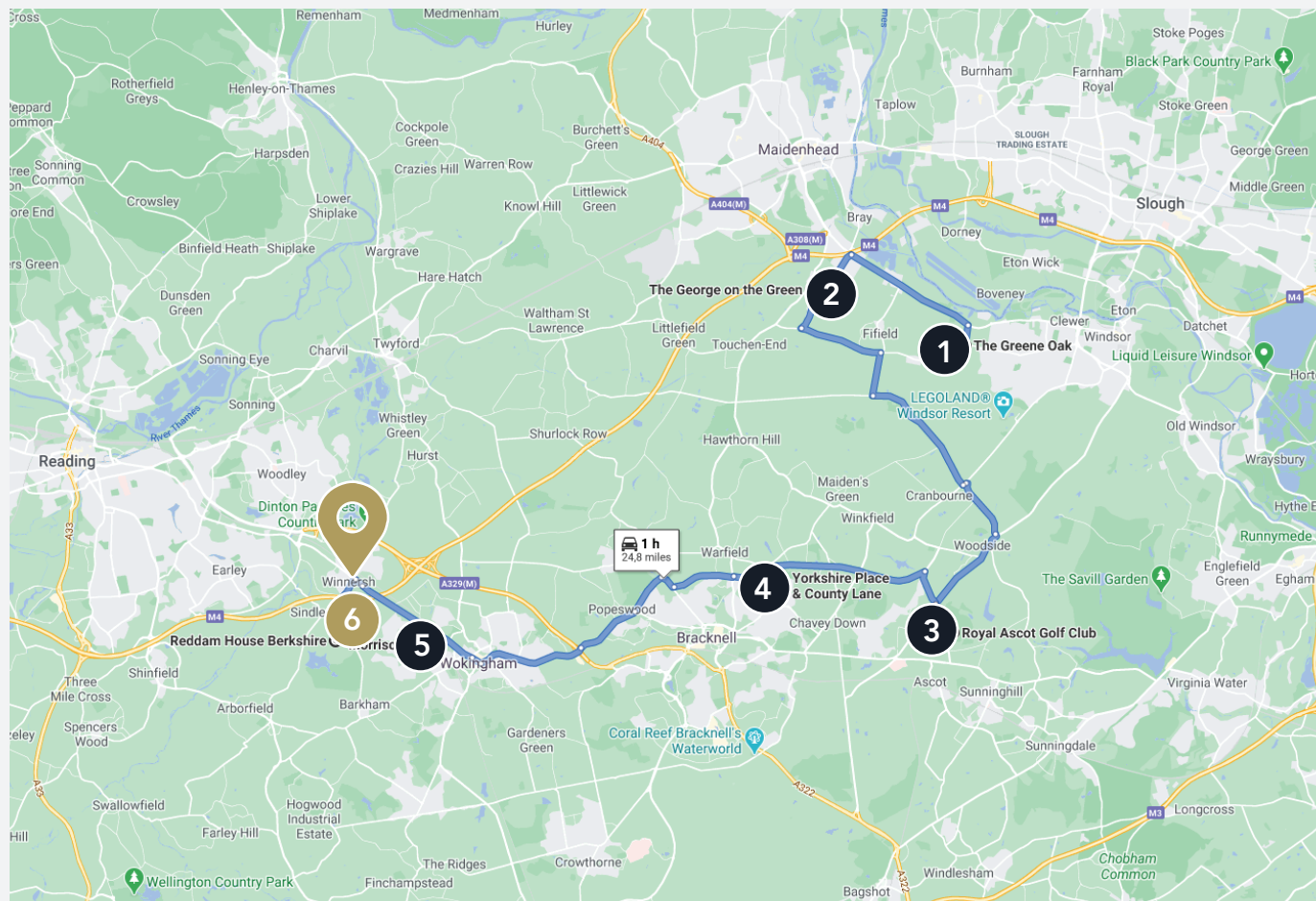
Reddam House Berkshire currently operate a school transport service covering the Maidenhead, Ascot, Reading and Hook areas. All vehicles are operated according to current EU legislation and are driven by appropriately trained, competent and qualified members of Reddam House staff.

ROUTES

School transport routes are planned in order to maximise efficiency, reducing traveling times to/from designated drop off/pick up points. When dropping off or picking up children the following points are requested to be observed:

1. Timings displayed on all routes below are suggested travelling times between drop off/pick up points dependent on traffic congestion which may cause delays.
2. Where possible pick up/drop off points are located off of the road however, caution should be observed by all parents as some roads become heavily chocked, particularly during the week.
3. Drivers will wait for a period of no longer than 5 minutes at each stop. The driver will inevitably make a decision to proceed on the route following that time.
4. Parents are respectfully requested to observe a degree of patience should the bus be delayed for any reason. Every attempt is made to ensure children are collected/delivered on time.
5. Vehicles will be marked as Reddam House Berkshire vehicles. The majority of vehicles will be silver grey in colour unless a temporary vehicle is being used.
6. Service routes are subject to slight change in which case parents will be informed by either the driver or Transport Manager.
7. School vehicles are only to be approached after it has come to a complete stop.
8. The vehicle driver must not be unnecessarily distracted unless an emergency arises
9. Pupils are to be reminded of the danger when crossing the road particularly when entering or exiting vehicles. Pupils are to wait until the vehicle has moved away, when being dropped off, in order to ensure the road is clear in both directions before crossing. Crossings should be used if present.

Transport Routes



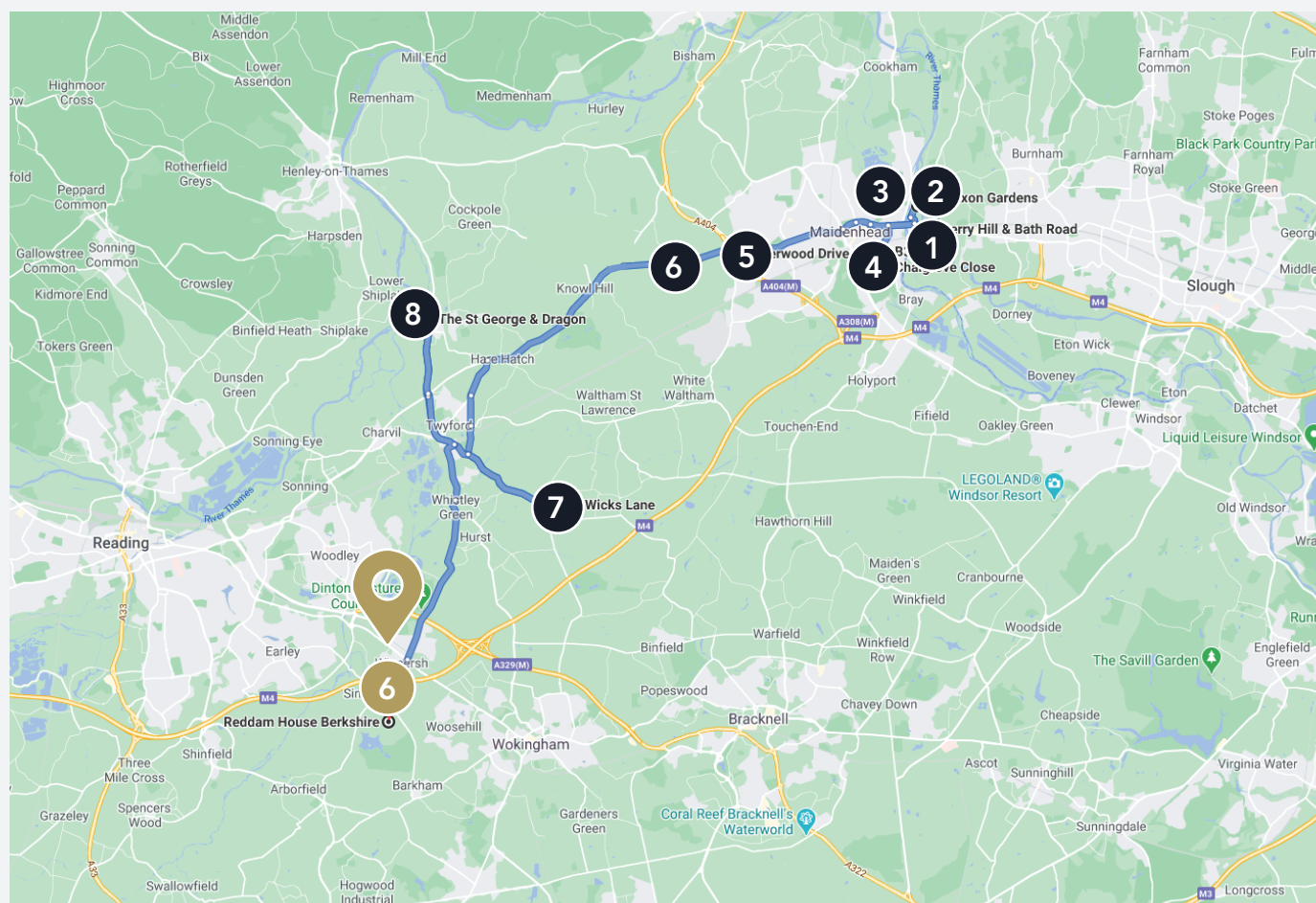
Windsor / Ascot Route

| | |
|---|-------------------|
| The Greene Oak, Oakley Green | 07:00am - 18:45pm |
| The George on the Green, Holyport | 07:10am - 18:35pm |
| Ascot Golf Course | 07:25am - 18:20pm |
| County Lane / Yorkshire Place, Warfield | 07:40am - 18:05pm |
| Morrisons, Woosehill | 08:00am - 17:45pm |



Transport

Routes

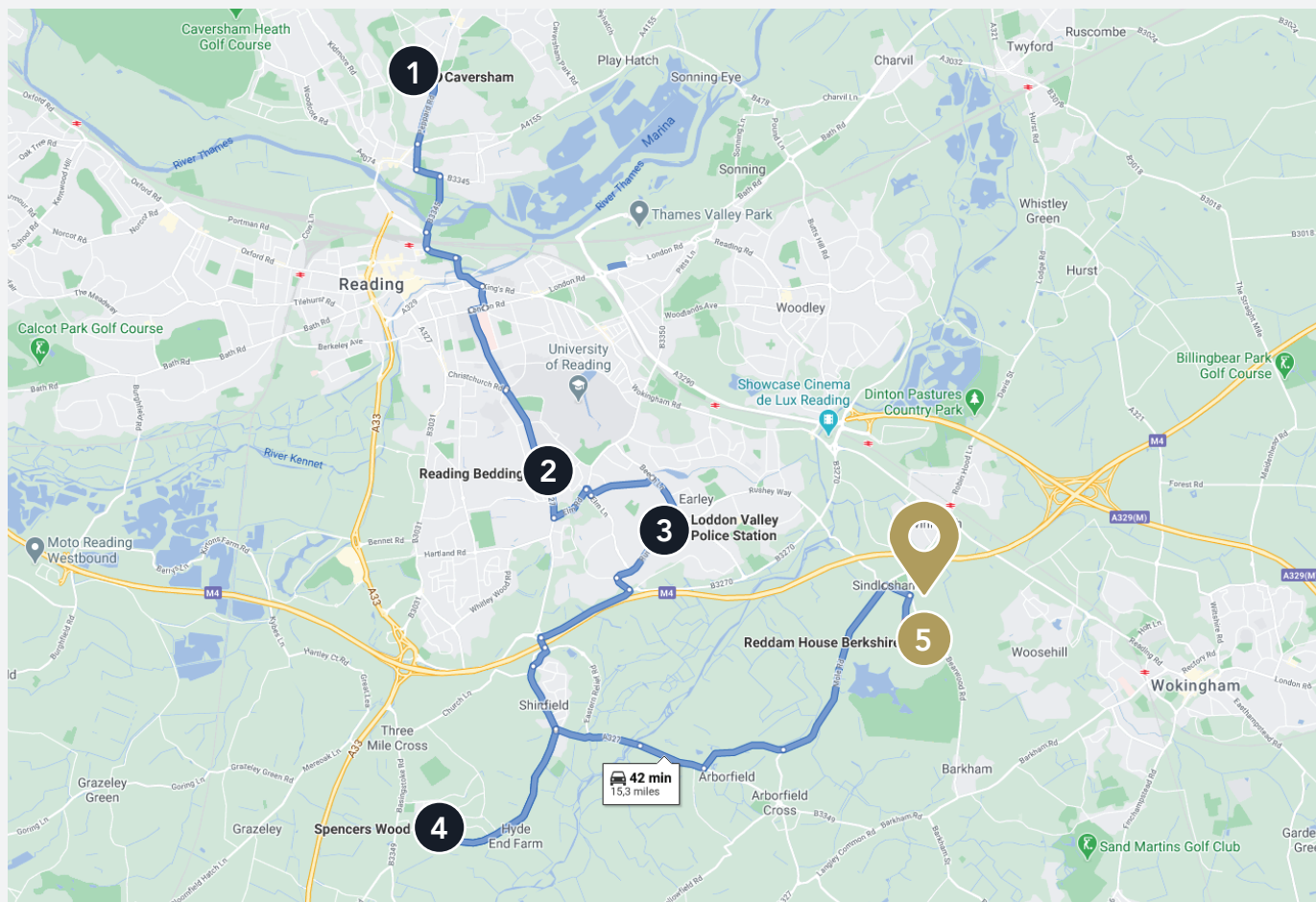


Maidenhead Route

| | |
|---|-------------------|
| Chalgrove Close / Bray Road, Maidenhead | 07:05am - 18:50pm |
| Barry Hill / Bath Road Juntion, Taplow | 07:15am - 18:40pm |
| Saxon Gardens, Taplow | 07:15am - 18:40pm |
| Laychequers Meadows, Taplow | 07:20am - 18:35pm |
| Sherwood Drive, Maidenhead | 07:40am - 18:15pm |
| Shire Horse, Littlewick Green | 07:45am - 18:20pm |
| Wicks Lane, Shurlock Row | 07:55am - 18:10pm |
| St George & Dragon, Wargrave | 08:25am - 17:50pm |



Transport Routes

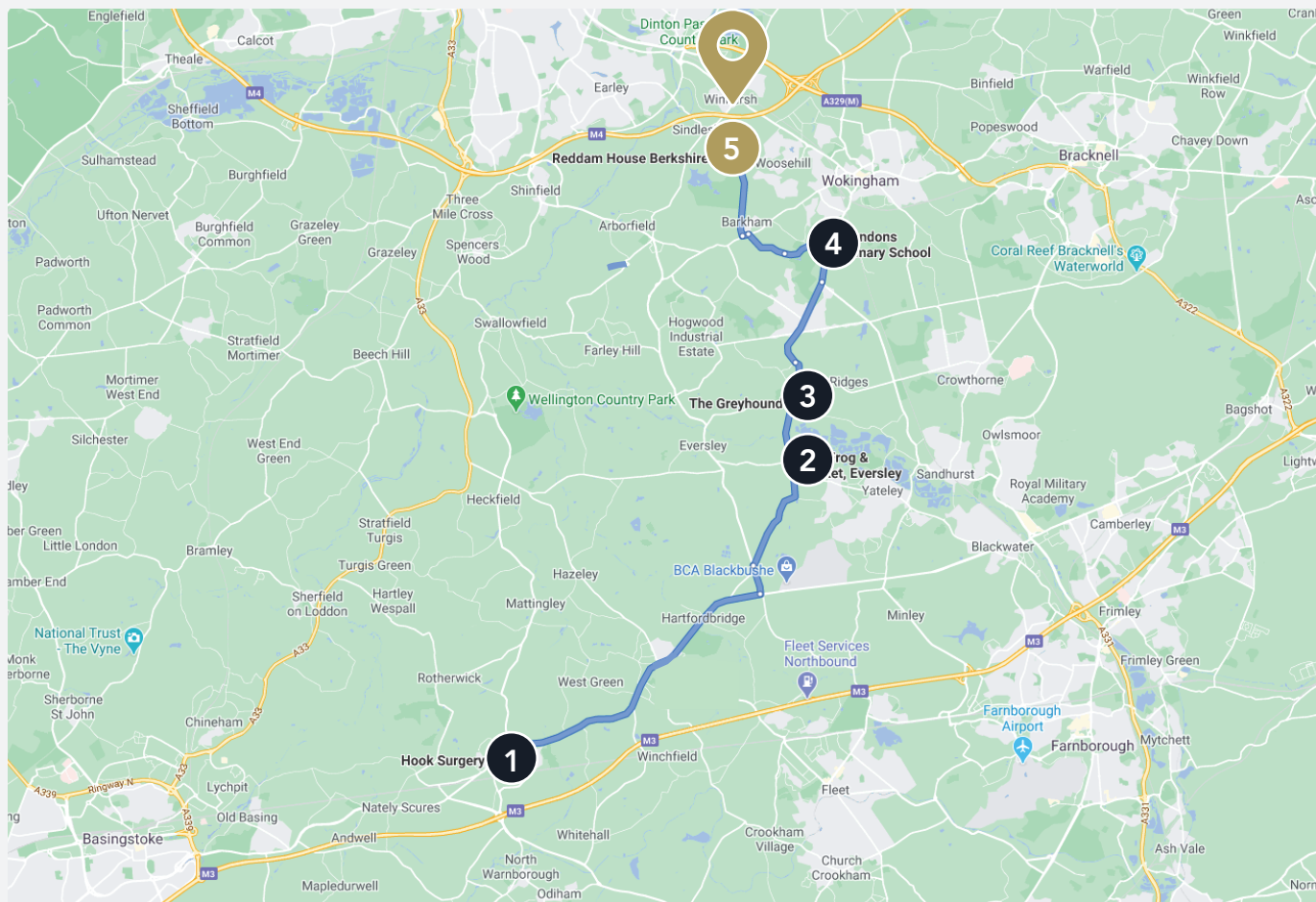


Reading Route

| | |
|---|-------------------|
| Caversham | 07:10am - 18:35pm |
| Reading Bedding, Cressingham Road | 07:35am - 18:15pm |
| Loddon Valley Police Station, Lower Earley, | 07:45am - 18:00pm |
| Spencers Wood | 08:05am - 17:45pm |



Transport Routes



Hook Route

| | |
|------------------------------------|-------------------|
| Hook Surgery | 07:15am - 18:15pm |
| The Frog & Wicket, Eversley | 07:30am - 18:00pm |
| The Greyhound, Finchampstead | 07:35am - 17:50pm |
| Evendons Primary School, Wokingham | 07:45am - 17:40pm |

